

**Box Culvert Traveler**

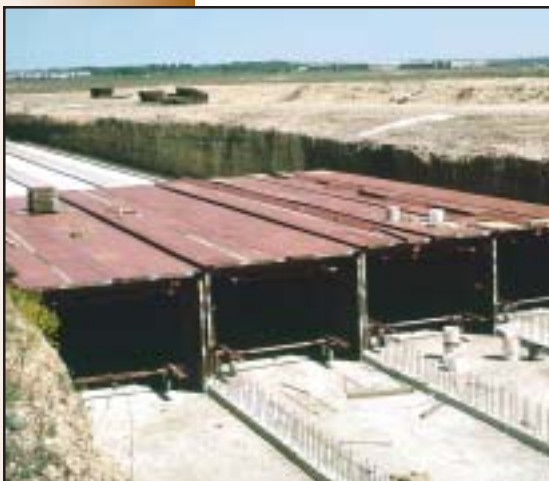
## Box Culvert Traveler



The Box Culvert Traveler is a versatile forming system that utilizes standard forms, sets and strips quickly and allows the interior form to be moved to the next pour position on its own wheels.



The unique components of the Box Culvert Traveler make this system cost effective and productive. All-steel headers and uprights result in a sturdy and durable traveler. Header and upright assemblies are shipped factory-assembled for your application.



The workhorse of the system and the key to its ease of operation is the 10" composition wheel on a full swivel caster. This allows movement by manual means even on the heaviest applications.

## System Versatility

The Box Culvert Traveler incorporates innovative design with simple utility to reduce skilled labor requirements without sacrificing versatility. The Box Culvert Traveler is designed for use with the Steel-Ply®, Versiform®, and Max-A-Form® forming systems for a wide range of culvert forming applications.

Traveler	Height* or Width**	
	Minimum	Maximum
Type I	5'-0"	6'-6"
Type II	6'-6"	9'-0"
Type III	9'-0"	12'-0"

Interchangeable for various combinations:

- \* 12" upright extension adds 1'-0" to maximum heights.
- \* Max-A-Form applications offer unlimited height capability
- \*\* Multiple headers increase width capability

The Box Culvert Traveler is a totally rentable system. Symons can offer a variety of rental and purchase options allowing you to choose a system that will meet both your present and future needs.



**Adjustable Column Form** — Form square or rectangular columns efficiently with a minimum number of steel panels.

**Alisply™** — Clamp-type metric dimension system is quickly assembled and reconfigured for fast-paced gangforming.

**Aluminum Beams and Joists** — Lightweight beams/ joists from 4' to 30' (122cm to 914cm) for deck or gangform applications.

**Box Culvert Traveler** — Rolling steel framework is compatible with Steel-Ply, Versiform and Max-A-Form systems.

**Chemicals** — Liquid, cement and epoxy products for concrete construction and repair.

**Flex-Form®** — Specially designed steel-faced system for forming curved walls and round tanks with no surface "chording".

**Form Liner** — More than 30 standard patterns, in four different materials, create unique concrete textures.

**FrameFast™** — Provide 24,000 lb. (106kN) load capacity per shore frame with spacings from 3' to 15' (91.4cm to 457.2cm).

**Garage Beam System** — A complete system provides an economical, poured-in-place concrete parking garage.

**Logo™** — The quick-clamping metric system for gangforming. (Logo is a trademark of PASCHAL-Werk G. Maier GmbH.)

**Max-A-Form®** — A durable, all-steel forming system that requires no walers. Ideal for pier caps and self-spanning applications.

**Resi-Ply™** — A low cost, 1<sup>1</sup>/<sub>8</sub>" (2.9cm) plywood forming system for residential construction. Available in 4-bar, 5-bar and 6-bar.

**Roller Deck** — Column mounted deck support system replaces conventional shoring, providing access for other trades.

**ShorFast™** — Aluminum leg and jack shoring system can support up to 30kips (133kN) per leg.

**Steel-Ply®** — The most popular modular system with more than 80 panel and filler sizes for handset or gangforming.

**Symons Soldier™** — The "next generation" construction beam that can be used as a brace, strongback, waler or shore.

**Street Smart™** — Reusable steel forms for residential curb and gutters, industrial slabs and highway paving applications.

**Symons Silver™** — A lightweight aluminum system that makes residential forming operations very efficient and productive.

**Versiform®** — Steel frame/plywood face gangforming system that provides a smooth concrete finish.



SYMONS CORPORATION  
200 E. Touhy Avenue  
Des Plaines, IL 60018 USA  
847-298-3200 • FAX 847-635-9287  
www.symons.com • info@symons.com



**Call 800-800-SYMONS**